



MONTHLY MEMBERSHIP PROGRESS REPORT

District 27 E2

Results as of: 05/31/2019

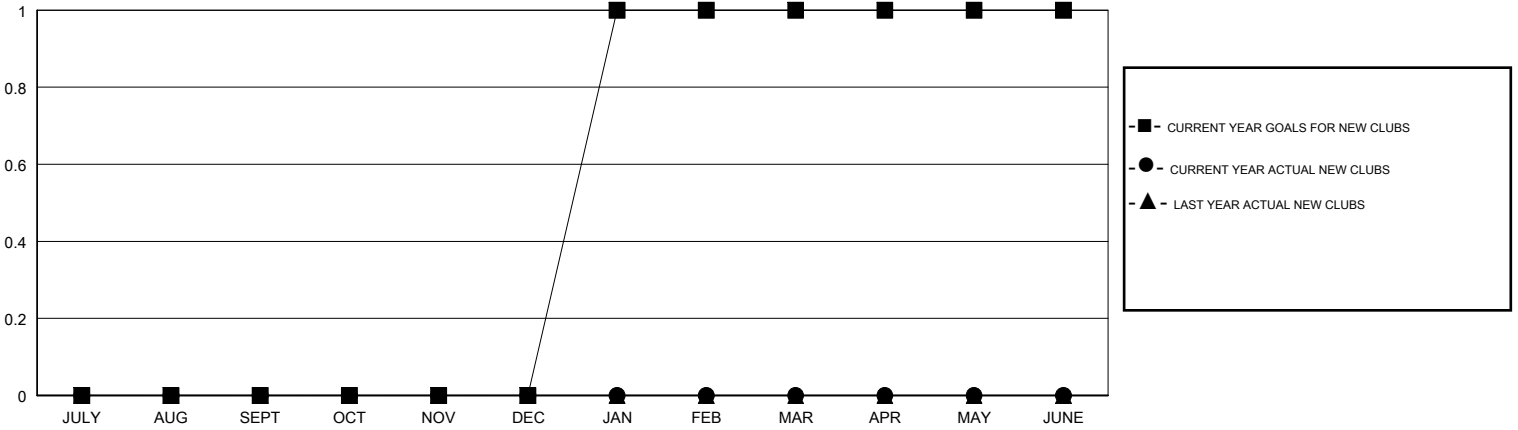
GMT: OPEN

LOCATION WISCONSIN

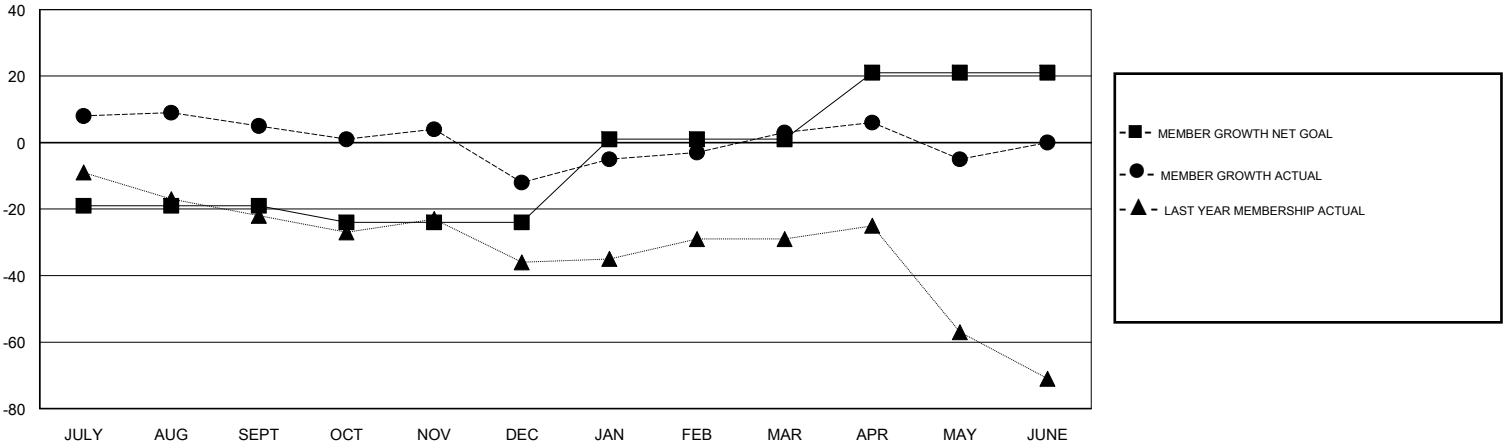
GMT CA

Clubs				Members			
RESULTS FOR 2018-2019				RESULTS FOR 2018-2019			
QUARTER	NEW CLUB GOAL	NEW CLUBS	DROPPED CLUBS	QUARTER	MEMBER GROWTH NET GOAL	MEMBER GROWTH ACTUAL	DROPPED MEMBERS ACTUAL (including transfers)
JULY/AUG/SEPT	0	0	0	JULY/AUG/SEPT	-19	30	23
OCT/NOV/DEC	0	0	0	OCT/NOV/DEC	-5	28	43
JAN/FEB/MAR	1	0	0	JAN/FEB/MAR	25	41	23
APR/MAY/JUNE	0	0	0	APR/MAY/JUNE	20	14	21

GOALS AND ACTUAL NEW CLUBS CUMULATIVE



GOALS AND ACTUAL MEMBERS CUMULATIVE



DROPPED CLUBS: 0	29 CLUBS OF 46 ADDED 1 OR MORE NEW MEMBERS	<u>GENDER DISTRIBUTION</u>	
DROPPED MEMBERS		MALE	1,298 (77.49%)
DECEASED	22	FEMALE	377 (22.51%)
CLUB CANCELLED	0	Women Percentage Fiscal Year Goal: 25%	
OTHER	88	TOTAL FAMILY UNIT MEMBERS	255
TOTAL	110	FAMILY MEMBERS PAYING HALF DUES	128

[CLICK HERE FOR CUMULATIVE MEMBERSHIP DATA](#)